

Hand-held marking system FlyMarker® mini



 **FLYMARKER**®
Mark like a Professional

Battery operated hand-held marking system FlyMarker® mini

The FlyMarker® mini is already the fourth generation of the proven, battery operated dot peen marker. The long-term experience in manufacturing mobile hand-held marking systems and the comprehensive knowledge about the customer and market requirements have been consistently integrated in the development of this product.

The compact marking device convinces next to a high-quality construction, its low weight of only 2.4 kg, a self-explanatory software and a stable two-hand operation also with its attractive price.

The housing consists of glass fibre reinforced plastic and is with this more break resistant than for example housings from die-cast aluminum. The control unit, a high-resolution LC display as well as the keyboard are integrated in the housing. The marking area has a size of 65 x 30 mm.

Nearly all materials can be marked durable and unforgeable – from plastics, aluminum and stainless steel up to hardened steel. Depending on the material and the customer requirements, the marking force and with this the marking depth can be adjusted individually. Subsequent processing such as sand blasting, coating, and so on mean not a problem in most cases. The marking remains visible.

Next to characters and numbers also individual company logos, test symbols or Data Matrix Codes can be marked. For special application as for example marking round work pieces on the face, etc. several optional accessories are available. Integrated threaded holes on the positioning plate enable also to mount customized equipment.



Battery operated - 100% mobile

The powerful Lithium-Ion-Battery enables a completely mobile work with the FlyMarker® mini. Tripping hazards due to power cables or cables for compressed air supply as well as accidents at work due to common stamping tools belong to the past.

Due to its low weight, this mobile marking unit can easily be carried through the works premises directly to the big and unmovable work pieces to be marked - just like it happens day by day with a common cordless screwdriver. For the transportation to another construction site or a different hall, the practical carrying case can be used.

ADVANTAGES AT A GLANCE



Practical carrying case

The marking device including the complete scope of supply is well-protected in the carrying case.



Self-explanatory software

The software is self-explanatory and can be operated with only small computer knowledge.



Integrated numeric keys

Numeric keys are integrated in the keyboard and must not be accessed via a submenu of the software.



Integrated interfaces

USB- and Ethernet-interfaces are integrated for an easy import and export of data files.

Ergonomics

Due to the well-conceived ergonomics, the marking device sits perfectly in the hand and an effortless operation is possible, also in vertical work positions. An additional handle is mounted on the front face of the marking system. This handle allows an ergonomic two-hand operation and an even easier, precise and secure positioning of the marking system on the work piece to be marked. Slipping away during the marking process can be avoided. If there is less space between work pieces, the second handle at the front face of the system can be dismantled easily.

Integrated keyboard inclusive numeric keys

The programming of the marking files can be done directly via the integrated keyboard. This keyboard is oriented to the field of view when the marking unit is positioned vertically. This enables a very easy data input. Compared to a membrane keyboard the data input is much easier as proper key buttons are available which are clearly defined and very easy to press. Due to the numeric keys which are directly integrated in the keyboard, numbers can be typed in directly without accessing a submenu of the software.

High-quality mechanics and electronics

The FlyMarker® *mini* owes its good marking results to the stable and long-lasting mechanics. The high-quality linear guides in x- and y-direction are double guided. Compared to systems with a swinging axle, it is with this dot peen marking unit possible to create very precise multi line markings without any loss in quality of the marking result. Due to a continuous, solid and robust base support with an integrated



positioning plate, a high mechanical stiffness can be guaranteed. The marking force of the solenoid can be adjusted individually to the material to be marked and to the needed marking depth.

The electronics of the FlyMarker® *mini* is well protected against soiling. All electronical cables are led in a trailing chain. The built-in interfaces are covered and with this protected from external influences.

Self-explanatory software

The clearly designed software of the FlyMarker® *mini* is very easy to understand and can be operated intuitively. Only small computer knowledge is necessary. Thanks to the use of latest processor technologies, a fast navigation and quick access times to the marking files is possible. There are many language versions available. Helpful commands such as variables for time, date or auto numbering are included in the standard scope of delivery. Via the practical preview function it is possible to picture the marking file in the LC color display before the marking process will be started. With this incorrect markings can be avoided.



Illuminated marking area

For a secure positioning on the work piece a LED lighting can be switched on.



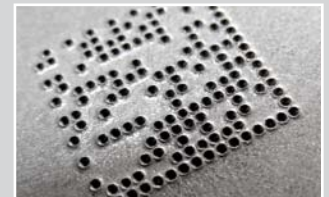
Height compensation

Height tolerances up to 5 mm can be compensated and a constant marking depth can be guaranteed.



Logo marking (optional)

Individual company logos or test symbols can be imported into the system and be marked very easy.



Data Matrix Code (optional)

The machine readable 2D-code provides a high information density on small space and is a standard.



Data management

Several hundreds of marking files, fonts and logos can be stored and administered in the internal memory of the hand-held marking system.

The USB-interfaces positioned on both sides of the FlyMarker® *mini* enable a fast import and export of marking files. Also external devices such as for example a barcode scanner can be connected to these interfaces. The content of a barcode can with this be read very quickly into the system and the characters and numbers can be marked directly on the work pieces using the preset configuration.

Optional available column frame

To mark small work pieces and identification tags, the FlyMarker® *mini* can quickly and with little effort be mounted on a column frame and can then be used as a table marking system.

Due to the integrated positioning plate on the base plate of the FlyMarker® *mini*, the marking unit can be fixed on the work piece by a tilting movement of the handle. With this the work piece cannot move during the marking process.

Thanks to the smooth-running linear guides the height adjustment to the work piece is very easy. The display can be turned by pressing only one key and is then oriented to the user. The release button to start the marking is located on the handle of the column frame.



Positioning plate with prisms

Two prisms on the positioning plate are very helpful for marking round work pieces (radial & axial).



Integrated scanner (optional)

Integrated scanner to gather the data of the content of 2D-codes e.g. Barcodes or QR-codes.

TECHNICAL DATA

Marking area (x/y)

65 x 30 mm

Available character heights

1.0 to 29.9 mm

Fonts

Medium spaced lettering similar to DIN 1451 in single dot characters (size 5 x 7 or 9 x 13)

Drive of the marking pin

Electromagnetic

Available characters

Numbers 0-9, Capital letters / Small letters A-Z; a-z
Various punctuation marks e.g. ; / , etc.

Interfaces

USB-A, USB-B, Ethernet

Height compensation

up to max. 5 mm
(constant marking depth also on uneven surfaces)

Weight

2.4 kg

Battery capacity

2.0 Ah, 18V (Lithium Ion)

Marking force

30 possible force settings (constant impact performance through the complete battery runtime)

Branches & Industries



Offshore



Plant engineering



Ship building industry



Wind energy



Scaffold construction



Car body construction



Pipelines



Aerospace



Steel construction



Stainless steel trade



Medical technology



Trailer construction



Agricultural machinery



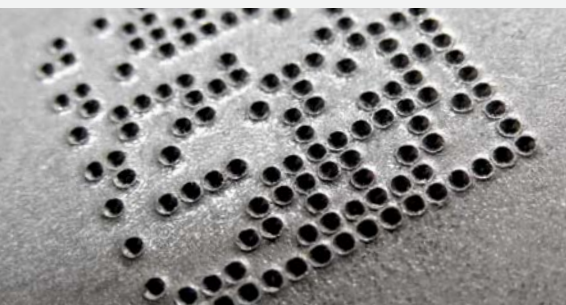
Equipment of fire brigades



Railway transport



Inventory labelling



MARKATOR®

Bunsenstraße 15
71642 Ludwigsburg
Germany

Telefon: +49 (0) 7144 - 8575 - 0
Telefax: +49 (0) 7144 - 8575 - 600

info@markator.de
www.markator.de

